

BARGE "WEB P7"

**PORT
HORIZONTAL
INNAGE TABLE**

CAPACITIES GIVEN IN BARRELS OF 42 U.S. GALLONS																			
IN	0 FT.	IN	1 FT.	IN	2 FT.	IN	3 FT.	IN	4 FT.	IN	5 FT.	IN	6 FT.	IN	7 FT.	IN	8 FT.	IN	9 FT.
0	0.00	0	183.75	0	514.85	0	925.58	0	1,399.78	0	1,918.35	0	2,468.90	0	3,040.97	0	3,625.18	0	4,212.66
1/4	1.11	1/4	189.55	1/4	519.77	1/4	934.94	1/4	1,410.20	1/4	1,928.55	1/4	2,480.64	1/4	3,053.06	1/4	3,637.42	1/4	4,224.87
1/2	2.23	1/2	195.36	1/2	525.68	1/2	944.31	1/2	1,420.63	1/2	1,940.75	1/2	2,492.39	1/2	3,065.14	1/2	3,649.66	1/2	4,237.08
3/4	3.34	3/4	201.17	3/4	535.60	3/4	953.68	3/4	1,431.06	3/4	1,951.96	3/4	2,504.13	3/4	3,077.23	3/4	3,661.89	3/4	4,248.28
1	4.45	1	206.97	1	543.51	1	963.04	1	1,441.48	1	1,963.16	1	2,515.88	1	3,089.31	1	3,674.13	1	4,261.49
1 1/4	6.49	1 1/4	212.99	1 1/4	551.62	1 1/4	972.51	1 1/4	1,451.99	1 1/4	1,974.44	1 1/4	2,527.66	1 1/4	3,101.42	1 1/4	3,686.37	1 1/4	4,273.89
1 1/2	8.52	1 1/2	219.01	1 1/2	559.82	1 1/2	981.98	1 1/2	1,462.49	1 1/2	1,985.57	1 1/2	2,539.45	1 1/2	3,113.53	1 1/2	3,698.89	1 1/2	4,285.89
2	10.56	2	225.04	2	567.88	2	991.44	2	1,472.99	2	1,996.93	2	2,551.23	2	3,125.63	2	3,710.86	2	4,298.08
2 1/2	12.60	2 1/2	231.06	2 1/2	575.73	2 1/2	1,000.91	2 1/2	1,483.49	2 1/2	2,008.18	2 1/2	2,563.01	2 1/2	3,137.74	2 1/2	3,723.10	2 1/2	4,310.28
3	15.23	3	237.29	3	583.92	3	1,010.48	3	1,494.06	3	2,019.49	3	2,574.83	3	3,149.86	3	3,735.35	3	4,322.46
3 1/2	17.87	3 1/2	243.51	3 1/2	592.12	3 1/2	1,020.04	3 1/2	1,504.64	3 1/2	2,030.80	3 1/2	2,586.64	3 1/2	3,161.99	3 1/2	3,747.59	3 1/2	4,334.65
4	20.50	4	249.74	4	600.31	4	1,029.51	4	1,515.21	4	2,042.11	4	2,598.46	4	3,174.11	4	3,759.84	4	4,346.83
4 1/2	23.14	4 1/2	255.97	4 1/2	608.50	4 1/2	1,039.18	4 1/2	1,525.79	4 1/2	2,053.42	4 1/2	2,610.28	4 1/2	3,186.24	4 1/2	3,772.06	4 1/2	4,359.02
5	26.25	5	262.38	5	616.52	5	1,048.84	5	1,536.43	5	2,064.78	5	2,622.13	5	3,198.38	5	3,784.33	5	4,371.19
5 1/2	29.37	5 1/2	268.80	5 1/2	625.15	5 1/2	1,058.60	5 1/2	1,547.08	5 1/2	2,076.14	5 1/2	2,633.98	5 1/2	3,210.52	5 1/2	3,796.56	5 1/2	4,383.36
6	32.49	6	275.21	6	633.47	6	1,068.16	6	1,557.72	6	2,087.50	6	2,645.83	6	3,222.66	6	3,808.83	6	4,395.53
6 1/2	35.60	6 1/2	281.62	6 1/2	641.79	6 1/2	1,077.83	6 1/2	1,568.37	6 1/2	2,098.85	6 1/2	2,657.67	6 1/2	3,234.80	6 1/2	3,821.07	6 1/2	4,407.71
7	39.13	7	288.21	7	650.25	7	1,087.58	7	1,579.08	7	2,110.26	7	2,669.56	7	3,246.96	7	3,833.32	7	4,419.86
7 1/2	42.66	7 1/2	294.80	7 1/2	658.70	7 1/2	1,097.34	7 1/2	1,589.80	7 1/2	2,121.67	7 1/2	2,681.44	7 1/2	3,259.12	7 1/2	3,845.57	7 1/2	4,432.02
8	46.19	8	301.39	8	667.15	8	1,107.10	8	1,600.51	8	2,133.08	8	2,693.32	8	3,271.27	8	3,857.82	8	4,444.18
8 1/2	49.73	8 1/2	307.98	8 1/2	675.51	8 1/2	1,116.85	8 1/2	1,611.22	8 1/2	2,144.49	8 1/2	2,705.20	8 1/2	3,283.43	8 1/2	3,870.07	8 1/2	4,456.34
9	53.62	9	314.75	9	684.18	9	1,126.70	9	1,622.01	9	2,155.94	9	2,717.11	9	3,295.60	9	3,882.31	9	4,468.48
9 1/2	57.52	9 1/2	321.52	9 1/2	692.76	9 1/2	1,136.55	9 1/2	1,632.79	9 1/2	2,167.40	9 1/2	2,729.02	9 1/2	3,307.78	9 1/2	3,894.56	9 1/2	4,480.62
10	61.42	10	328.30	10	701.34	10	1,146.39	10	1,643.57	10	2,178.55	10	2,740.93	10	3,319.95	10	3,906.81	10	4,492.76
10 1/2	65.32	10 1/2	335.07	10 1/2	709.92	10 1/2	1,156.24	10 1/2	1,654.35	10 1/2	2,190.31	10 1/2	2,752.85	10 1/2	3,332.12	10 1/2	3,919.06	10 1/2	4,504.90
11	69.55	11	342.02	11	718.62	11	1,166.18	11	1,665.20	11	2,201.81	11	2,764.79	11	3,344.30	11	3,931.30	11	4,517.03
11 1/2	73.78	11 1/2	348.96	11 1/2	727.32	11 1/2	1,176.12	11 1/2	1,676.04	11 1/2	2,213.31	11 1/2	2,776.73	11 1/2	3,356.49	11 1/2	3,943.55	11 1/2	4,529.15
12	78.02	12	355.91	12	736.02	12	1,186.05	12	1,686.89	12	2,224.81	12	2,788.67	12	3,368.67	12	3,955.79	12	4,541.27
12 1/2	82.25	12 1/2	362.86	12 1/2	744.72	12 1/2	1,195.99	12 1/2	1,697.73	12 1/2	2,236.32	12 1/2	2,800.61	12 1/2	3,380.86	12 1/2	3,968.04	12 1/2	4,553.40
13	86.79	13	369.98	13	753.53	13	1,206.01	13	1,708.65	13	2,247.85	13	2,812.58	13	3,393.06	13	3,980.28	13	4,565.50
13 1/2	91.33	13 1/2	377.10	13 1/2	762.35	13 1/2	1,216.04	13 1/2	1,719.56	13 1/2	2,259.41	13 1/2	2,824.54	13 1/2	3,405.25	13 1/2	3,992.52	13 1/2	4,577.61
14	95.86	14	384.22	14	771.17	14	1,226.06	14	1,730.47	14	2,270.95	14	2,836.51	14	3,417.45	14	4,004.77	14	4,589.72
14 1/2	100.40	14 1/2	391.33	14 1/2	779.99	14 1/2	1,236.09	14 1/2	1,741.38	14 1/2	2,282.50	14 1/2	2,848.48	14 1/2	3,429.65	14 1/2	4,017.01	14 1/2	4,601.82
15	105.23	15	398.62	15	788.92	15	1,246.19	15	1,752.35	15	2,294.09	15	2,860.48	15	3,441.86	15	4,029.25	15	4,613.91
15 1/2	110.05	15 1/2	405.90	15 1/2	797.86	15 1/2	1,256.30	15 1/2	1,763.32	15 1/2	2,305.68	15 1/2	2,872.47	15 1/2	3,454.06	15 1/2	4,041.48	15 1/2	4,625.99
16	114.87	16	413.18	16	806.79	16	1,266.41	16	1,774.29	16	2,317.27	16	2,884.46	16	3,466.27	16	4,053.72	16	4,638.08
16 1/2	119.70	16 1/2	420.47	16 1/2	815.72	16 1/2	1,276.52	16 1/2	1,785.26	16 1/2	2,328.86	16 1/2	2,896.46	16 1/2	3,478.48	16 1/2	4,065.96	16 1/2	4,650.17
17	124.79	17	427.92	17	824.77	17	1,286.71	17	1,796.30	17	2,340.49	17	2,908.48	17	3,490.70	17	4,078.19	17	4,662.23
17 1/2	129.88	17 1/2	435.37	17 1/2	833.82	17 1/2	1,296.90	17 1/2	1,807.33	17 1/2	2,352.12	17 1/2	2,920.50	17 1/2	3,502.91	17 1/2	4,090.42	17 1/2	4,674.30
18	134.97	18	442.83	18	842.86	18	1,307.10	18	1,818.36	18	2,363.75	18	2,932.52	18	3,515.13	18	4,102.66	18	4,686.36
18 1/2	140.06	18 1/2	450.28	18 1/2	851.91	18 1/2	1,317.29	18 1/2	1,829.39	18 1/2	2,375.38	18 1/2	2,944.54	18 1/2	3,527.35	18 1/2	4,114.89	18 1/2	4,698.43
19	145.40	19	457.90	19	861.06	19	1,327.56	19	1,840.48	19	2,387.05	19	2,956.58	19	3,539.57	19	4,127.11	19	4,710.47
19 1/2	150.74	19 1/2	465.53	19 1/2	870.22	19 1/2	1,337.83	19 1/2	1,851.57	19 1/2	2,398.72	19 1/2	2,968.62	19 1/2	3,551.80	19 1/2	4,139.34	19 1/2	4,722.51
20	156.09	20	473.15	20	879.37	20	1,348.10	20	1,862.66	20	2,410.39	20	2,980.66	20	3,564.02	20	4,151.57	20	4,734.56
20 1/2	161.43	20 1/2	480.77	20 1/2	888.53	20 1/2	1,358.37	20 1/2	1,873.76	20 1/2	2,422.06	20 1/2	2,992.71	20 1/2	3,576.25	20 1/2	4,163.79	20 1/2	4,746.60
21	167.01	21	488.54	21	897.79	21	1,368.72	21	1,884.90	21	2,433.77	21	3,004.77	21	3,588.48	21	4,176.01	21	4,758.62
21 1/2	172.59	21 1/2	496.31	21 1/2	907.05	21 1/2	1,379.08	21 1/2	1,896.05	21 1/2	2,445.48	21 1/2	3,016.84	21 1/2	3,600.72	21 1/2	4,188.23	21 1/2	4,770.64
22	178.17	22	504.08	22	916.32	22	1,389.43	22	1,907.20	22	2,457.19	22	3,028.90	22	3,612.95	22	4,200.44	22	4,782.66

CERTIFIED CHART FOR THE ABOVE NAMED TANK ONLY.

PRECISION MEASUREMENT
& ANALYSIS, INC.

P.O. Box 2092

Pearland, Texas 77588

http://www.pmaacorp.net

BARGE STRAPPED AND COMPUTED IN ACCORDANCE WITH MPMS CHAPTER 2.2E.
CAPACITY TABLE ONLY APPLIES WHEN BARGE IS ON EVEN KEEL.
CAPACITY TABLE EXTENDS TO EXTREME HEIGHT OF TANK.
CAPACITY TABLE ONLY APPLIES TO INNAGE GAUGES.



BARGE "WEB P7"

PORT HORIZONTAL INNAGE TABLE

CAPACITIES GIVEN IN BARRELS OF 42 U.S. GALLONS

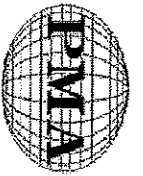
IN	10 FT.	IN	11 FT.	IN	12 FT.	IN	13 FT.	IN	14 FT.	IN	15 FT.	IN	16 FT.	IN	17 FT.	IN	18 FT.	IN	19 FT.
0	4,794.68	0	5,362.28	0	5,905.84	0	6,414.68	0	6,875.38	0	7,270.69	0	7,672.04	0					
1/4	4,806.67	1/4	5,372.87	1/4	5,916.82	1/4	6,424.69	1/4	6,884.31	1/4	7,278.00	1/4	7,678.87	1/4					
1/2	4,818.67	1/2	5,385.46	1/2	5,927.79	1/2	6,434.80	1/2	6,893.25	1/2	7,285.31	1/2	7,681.69	1/2					
3/4	4,830.66	3/4	5,397.05	3/4	5,938.76	3/4	6,444.91	3/4	6,902.18	3/4	7,292.62	3/4	7,686.52	3/4					
1	4,842.66	1	5,408.64	1	5,949.73	1	6,455.02	1	6,911.11	1	7,299.93	1	7,691.34	1					
1 1/4	4,854.62	1 1/4	5,420.18	1 1/4	5,960.64	1 1/4	6,465.04	1 1/4	6,919.93	1 1/4	7,307.07	1 1/4	7,695.88	1 1/4					
1 1/2	4,866.59	1 1/2	5,431.73	1 1/2	5,971.55	1 1/2	6,475.07	1 1/2	6,928.75	1 1/2	7,314.22	1 1/2	7,699.42	1 1/2					
3/4	4,878.56	3/4	5,443.28	3/4	5,982.46	3/4	6,485.09	3/4	6,937.57	3/4	7,321.36	3/4	7,694.96	3/4					
1	4,890.53	2	5,454.82	2	5,993.37	2	6,495.11	2	6,946.39	2	7,328.51	2	7,699.50	2					
1 1/4	4,902.47	1 1/4	5,466.32	1 1/4	6,004.22	1 1/4	6,505.05	1 1/4	6,955.09	1 1/4	7,335.48	1 1/4	7,613.73	1 1/4					
1 1/2	4,914.41	1 1/2	5,477.83	1 1/2	6,015.07	1 1/2	6,514.99	1 1/2	6,963.79	1 1/2	7,342.46	1 1/2	7,617.96	1 1/2					
3/4	4,926.35	3/4	5,489.33	3/4	6,025.91	3/4	6,524.93	3/4	6,972.49	3/4	7,349.43	3/4	7,622.19	3/4					
3	4,938.29	3	5,500.83	3	6,036.76	3	6,534.86	3	6,981.19	3	7,356.41	3	7,626.43	3					
1 1/4	4,950.20	1 1/4	5,512.28	1 1/4	6,047.54	1 1/4	6,544.71	1 1/4	6,989.76	1 1/4	7,363.20	1 1/4	7,630.32	1 1/4					
1 1/2	4,962.11	1 1/2	5,523.74	1 1/2	6,058.32	1 1/2	6,554.56	1 1/2	6,998.34	1 1/2	7,370.00	1 1/2	7,634.22	1 1/2					
3/4	4,974.03	3/4	5,535.19	3/4	6,069.10	3/4	6,564.41	3/4	7,006.92	3/4	7,376.80	3/4	7,638.12	3/4					
4	4,985.94	4	5,546.65	4	6,079.88	4	6,574.25	4	7,015.50	4	7,383.60	4	7,642.02	4					
1 1/4	4,997.82	1 1/4	5,558.06	1 1/4	6,090.60	1 1/4	6,584.01	1 1/4	7,023.95	1 1/4	7,390.22	1 1/4	7,645.55	1 1/4					
1 1/2	5,009.70	1 1/2	5,569.47	1 1/2	6,101.31	1 1/2	6,593.77	1 1/2	7,032.40	1 1/2	7,396.83	1 1/2	7,649.08	1 1/2					
3/4	5,021.58	3/4	5,580.87	3/4	6,112.02	3/4	6,603.52	3/4	7,040.85	3/4	7,403.45	3/4	7,652.61	3/4					
5	5,033.46	5	5,592.28	5	6,122.74	5	6,613.28	5	7,049.31	5	7,410.06	5	7,656.15	5					
1 1/4	5,045.31	1 1/4	5,603.64	1 1/4	6,133.38	1 1/4	6,623.94	1 1/4	7,057.63	1 1/4	7,416.49	1 1/4	7,659.25	1 1/4					
1 1/2	5,057.16	1 1/2	5,615.00	1 1/2	6,144.03	1 1/2	6,632.60	1 1/2	7,065.96	1 1/2	7,422.91	1 1/2	7,662.38	1 1/2					
3/4	5,069.01	3/4	5,626.36	3/4	6,154.67	3/4	6,642.26	3/4	7,074.28	3/4	7,429.34	3/4	7,665.50	3/4					
6	5,080.86	6	5,637.72	6	6,165.32	6	6,651.93	6	7,082.60	6	7,435.77	6	7,668.61	6					
1 1/4	5,092.68	1 1/4	5,649.03	1 1/4	6,175.89	1 1/4	6,661.49	1 1/4	7,090.79	1 1/4	7,441.99	1 1/4	7,671.25	1 1/4					
1 1/2	5,104.49	1 1/2	5,660.34	1 1/2	6,186.47	1 1/2	6,671.06	1 1/2	7,098.99	1 1/2	7,448.22	1 1/2	7,673.88	1 1/2					
3/4	5,116.31	3/4	5,671.65	3/4	6,197.04	3/4	6,680.53	3/4	7,107.18	3/4	7,454.45	3/4	7,676.52	3/4					
7	5,128.13	7	5,682.95	7	6,207.62	7	6,690.19	7	7,115.37	7	7,460.68	7	7,679.15	7					
1 1/4	5,139.91	1 1/4	5,694.21	1 1/4	6,218.12	1 1/4	6,699.66	1 1/4	7,123.43	1 1/4	7,466.70	1 1/4	7,681.19	1 1/4					
1 1/2	5,151.69	1 1/2	5,705.46	1 1/2	6,228.62	1 1/2	6,709.13	1 1/2	7,131.48	1 1/2	7,472.72	1 1/2	7,683.23	1 1/2					
3/4	5,163.47	3/4	5,716.72	3/4	6,239.12	3/4	6,718.59	3/4	7,139.54	3/4	7,478.75	3/4	7,685.26	3/4					
8	5,175.26	8	5,727.97	8	6,249.62	8	6,728.06	8	7,147.59	8	7,484.77	8	7,687.30	8					
1 1/4	5,187.00	1 1/4	5,739.17	1 1/4	6,260.05	1 1/4	6,737.43	1 1/4	7,156.51	1 1/4	7,490.57	1 1/4	7,688.41	1 1/4					
1 1/2	5,198.75	1 1/2	5,750.48	1 1/2	6,270.48	1 1/2	6,746.79	1 1/2	7,163.42	1 1/2	7,496.38	1 1/2	7,689.53	1 1/2					
3/4	5,210.50	3/4	5,761.58	3/4	6,280.90	3/4	6,756.16	3/4	7,171.34	3/4	7,502.19	3/4	7,690.64	3/4					
9	5,222.24	9	5,772.78	9	6,291.33	9	6,765.53	9	7,179.25	9	7,507.99	9	7,691.75	9					
1 1/4	5,233.95	1 1/4	5,783.92	1 1/4	6,301.68	1 1/4	6,774.79	1 1/4	7,187.02	1 1/4	7,513.57	1 1/4		1 1/4					
1 1/2	5,245.66	1 1/2	5,795.07	1 1/2	6,312.03	1 1/2	6,784.05	1 1/2	7,194.79	1 1/2	7,519.15	1 1/2		1 1/2					
3/4	5,257.37	3/4	5,806.21	3/4	6,322.38	3/4	6,793.31	3/4	7,202.56	3/4	7,524.73	3/4		3/4					
10	5,269.08	10	5,817.36	10	6,332.73	10	6,802.57	10	7,210.34	10	7,530.31	10		10					
1 1/4	5,280.75	1 1/4	5,828.45	1 1/4	6,343.00	1 1/4	6,811.73	1 1/4	7,217.96	1 1/4	7,535.86	1 1/4		1 1/4					
1 1/2	5,292.42	1 1/2	5,839.64	1 1/2	6,353.28	1 1/2	6,820.88	1 1/2	7,225.58	1 1/2	7,541.00	1 1/2		1 1/2					
3/4	5,304.09	3/4	5,850.63	3/4	6,363.55	3/4	6,830.04	3/4	7,233.20	3/4	7,546.34	3/4		3/4					
11	5,315.76	11	5,861.72	11	6,373.82	11	6,839.20	11	7,240.82	11	7,551.68	11		11					
1 1/4	5,327.39	1 1/4	5,872.75	1 1/4	6,384.01	1 1/4	6,848.24	1 1/4	7,248.29	1 1/4	7,556.77	1 1/4		1 1/4					
1 1/2	5,339.02	1 1/2	5,883.78	1 1/2	6,394.20	1 1/2	6,857.29	1 1/2	7,256.76	1 1/2	7,561.86	1 1/2		1 1/2					
3/4	5,350.65	3/4	5,894.81	3/4	6,404.39	3/4	6,866.33	3/4	7,263.22	3/4	7,566.95	3/4		3/4					

CERTIFIED CHART FOR THE ABOVE NAMED TANK ONLY.

STRAPPED: 10/23/2012 CL - SW
CALCULATED: 10/23/2012 CL
PRINTED: 10/23/2012 CL
CANCELS AND SUPERCEDES
ALL PRIOR TO 10/2012

PRECISION MEASUREMENT
& ANALYSIS, INC.

P.O. Box 2692
Pearland, Texas 77588
<http://www.pmacorp.net>



BARGE "WEB P7"

STBD HORIZONTAL INNAGE TABLE

Table with columns: IN, 0 FT., IN, 1 FT., IN, 2 FT., IN, 3 FT., IN, 4 FT., IN, 5 FT., IN, 6 FT., IN, 7 FT., IN, 8 FT., IN, 9 FT. Rows contain numerical data for capacity measurements.

CERTIFIED CHART FOR THE ABOVE NAMED TANK ONLY.

BARGE STRAPPED AND COMPUTED IN ACCORDANCE WITH MEMS CHAPTER 2.2E. CAPACITY TABLE ONLY APPLIES WHEN BARGE IS ON EVEN KEEL. CAPACITY TABLE EXTENDS TO EXTREME HEIGHT OF TANK. CAPACITY TABLE ONLY APPLIES TO INNAGE GAUGES.

PRECISION MEASUREMENT & ANALYSIS, INC.

Pearland, Texas 77588 P.O. Box 2892

Signature and contact information: http://www.pmaacorp.net



BARGE "WEB P7"

STBD HORIZONTAL INNAGE TABLE

CAPACITIES GIVEN IN BARRELS OF 42 U.S. GALLONS

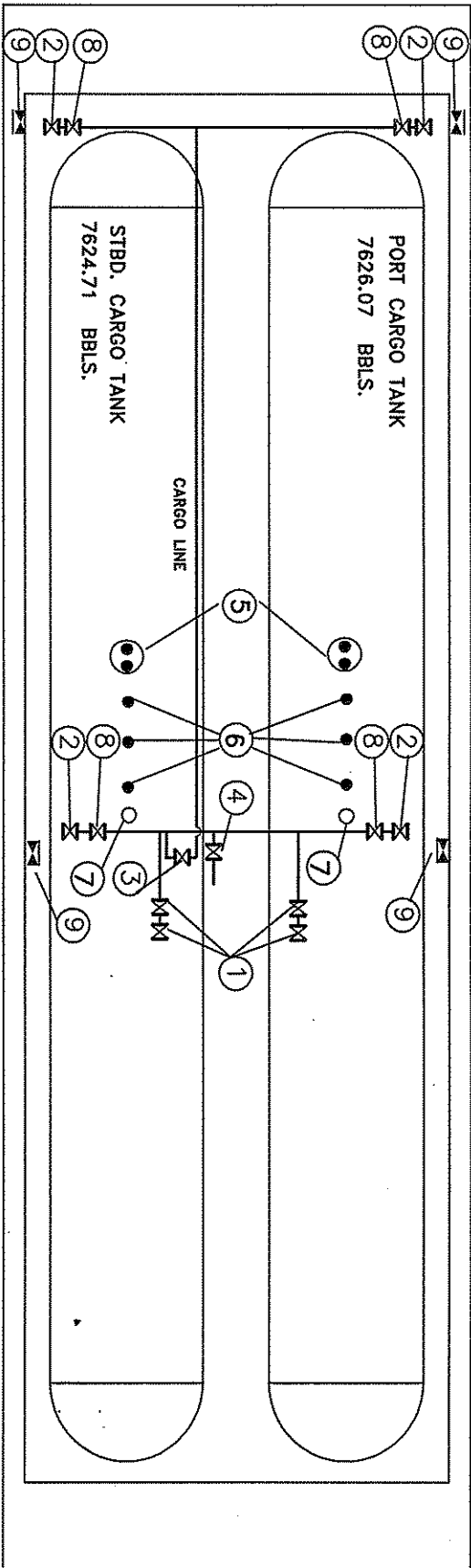
IN	10 FT.	IN	11 FT.	IN	12 FT.	IN	13 FT.	IN	14 FT.	IN	15 FT.	IN	16 FT.	IN	17 FT.	IN	18 FT.	IN	19 FT.
0	4,796.99	0	5,364.46	0	5,908.69	0	6,417.67	0	6,878.67	0	7,274.13	0	7,575.57	0	7,880.39	0			
1/4	4,808.96	1/4	5,376.45	1/4	5,919.67	1/4	6,427.79	1/4	6,887.60	1/4	7,281.44	1/4	7,580.39	1/4	7,880.39	1/4			
1/2	4,820.96	1/2	5,388.05	1/2	5,930.65	1/2	6,437.90	1/2	6,896.54	1/2	7,288.75	1/2	7,585.22	1/2	7,885.22	1/2			
3/4	4,832.96	3/4	5,399.64	3/4	5,941.63	3/4	6,448.01	3/4	6,905.48	3/4	7,296.06	3/4	7,590.04	3/4	7,890.04	3/4			
1	4,844.96	1	5,411.24	1	5,952.50	1	6,458.16	1	6,914.42	1	7,303.37	1	7,594.87	1	7,894.87	1			
1 1/4	4,856.94	1 1/4	5,422.79	1 1/4	5,963.52	1 1/4	6,468.13	1 1/4	6,923.24	1 1/4	7,310.52	1 1/4	7,599.41	1 1/4	7,899.41	1 1/4			
1 1/2	4,868.91	1 1/2	5,434.34	1 1/2	5,974.43	1 1/2	6,476.18	1 1/2	6,932.06	1 1/2	7,317.67	1 1/2	7,603.95	1 1/2	7,903.95	1 1/2			
1 3/4	4,880.89	1 3/4	5,445.89	1 3/4	5,985.35	1 3/4	6,488.21	1 3/4	6,940.88	1 3/4	7,324.81	1 3/4	7,608.49	1 3/4	7,908.49	1 3/4			
2	4,892.86	2	5,457.45	2	5,996.26	2	6,498.24	2	6,949.70	2	7,331.96	2	7,613.03	2	7,913.03	2			
1/4	4,904.81	1/4	5,468.95	1/4	6,007.12	1/4	6,508.18	1/4	6,958.41	1/4	7,338.94	1/4	7,617.26	1/4	7,917.26	1/4			
1/2	4,916.75	1/2	5,480.46	1/2	6,017.97	1/2	6,518.12	1/2	6,967.11	1/2	7,345.91	1/2	7,621.49	1/2	7,921.49	1/2			
3/4	4,928.70	3/4	5,491.97	3/4	6,028.82	3/4	6,528.06	3/4	6,975.81	3/4	7,352.89	3/4	7,625.73	3/4	7,925.73	3/4			
3	4,940.65	3	5,503.48	3	6,039.67	3	6,538.01	3	6,984.52	3	7,359.87	3	7,629.96	3	7,929.96	3			
1/4	4,952.56	1/4	5,514.94	1/4	6,050.46	1/4	6,547.86	1/4	6,993.10	1/4	7,366.57	1/4	7,633.86	1/4	7,933.86	1/4			
1/2	4,964.48	1/2	5,526.40	1/2	6,061.24	1/2	6,557.71	1/2	7,001.68	1/2	7,373.47	1/2	7,637.76	1/2	7,937.76	1/2			
3/4	4,976.40	3/4	5,537.86	3/4	6,072.03	3/4	6,567.56	3/4	7,010.26	3/4	7,380.27	3/4	7,641.66	3/4	7,941.66	3/4			
4	4,988.32	4	5,549.32	4	6,082.82	4	6,577.41	4	7,018.84	4	7,387.07	4	7,645.56	4	7,945.56	4			
1/4	5,000.21	1/4	5,560.74	1/4	6,093.54	1/4	6,587.17	1/4	7,027.30	1/4	7,393.69	1/4	7,649.09	1/4	7,949.09	1/4			
1/2	5,012.09	1/2	5,572.15	1/2	6,104.25	1/2	6,596.93	1/2	7,035.75	1/2	7,400.31	1/2	7,652.62	1/2	7,952.62	1/2			
3/4	5,023.98	3/4	5,583.56	3/4	6,114.97	3/4	6,606.70	3/4	7,044.21	3/4	7,406.92	3/4	7,656.15	3/4	7,956.15	3/4			
5	5,035.87	5	5,594.98	5	6,125.69	5	6,616.46	5	7,052.66	5	7,413.54	5	7,659.68	5	7,959.68	5			
1/4	5,047.72	1/4	5,606.34	1/4	6,136.34	1/4	6,626.12	1/4	7,060.99	1/4	7,419.97	1/4	7,662.80	1/4	7,962.80	1/4			
1/2	5,059.58	1/2	5,617.71	1/2	6,146.99	1/2	6,635.76	1/2	7,069.32	1/2	7,426.40	1/2	7,665.92	1/2	7,965.92	1/2			
3/4	5,071.44	3/4	5,629.07	3/4	6,157.64	3/4	6,645.46	3/4	7,077.64	3/4	7,432.83	3/4	7,669.04	3/4	7,969.04	3/4			
6	5,083.29	6	5,640.44	6	6,168.29	6	6,655.12	6	7,085.97	6	7,439.25	6	7,672.15	6	7,972.15	6			
1/4	5,095.12	1/4	5,651.75	1/4	6,178.87	1/4	6,664.89	1/4	7,094.17	1/4	7,445.48	1/4	7,674.79	1/4	7,974.79	1/4			
1/2	5,106.94	1/2	5,663.07	1/2	6,189.45	1/2	6,674.26	1/2	7,102.36	1/2	7,451.71	1/2	7,677.43	1/2	7,977.43	1/2			
3/4	5,118.76	3/4	5,674.38	3/4	6,200.03	3/4	6,683.83	3/4	7,110.56	3/4	7,457.94	3/4	7,680.06	3/4	7,980.06	3/4			
7	5,130.58	7	5,685.69	7	6,210.61	7	6,693.40	7	7,118.75	7	7,464.17	7	7,682.70	7	7,982.70	7			
1/4	5,142.37	1/4	5,696.95	1/4	6,221.12	1/4	6,702.87	1/4	7,126.81	1/4	7,470.20	1/4	7,684.73	1/4	7,984.73	1/4			
1/2	5,154.16	1/2	5,708.21	1/2	6,231.62	1/2	6,712.35	1/2	7,134.87	1/2	7,476.22	1/2	7,686.77	1/2	7,986.77	1/2			
3/4	5,165.95	3/4	5,719.47	3/4	6,242.13	3/4	6,721.82	3/4	7,142.93	3/4	7,482.24	3/4	7,688.81	3/4	7,988.81	3/4			
8	5,177.74	8	5,730.73	8	6,252.64	8	6,731.29	8	7,150.98	8	7,488.27	8	7,690.84	8	7,990.84	8			
1/4	5,189.49	1/4	5,741.94	1/4	6,263.07	1/4	6,740.66	1/4	7,158.90	1/4	7,494.08	1/4	7,691.96	1/4	7,991.96	1/4			
1/2	5,201.24	1/2	5,753.15	1/2	6,273.50	1/2	6,750.03	1/2	7,166.82	1/2	7,499.88	1/2	7,693.07	1/2	7,993.07	1/2			
3/4	5,212.99	3/4	5,764.35	3/4	6,283.93	3/4	6,759.40	3/4	7,174.74	3/4	7,505.69	3/4	7,694.18	3/4	7,994.18	3/4			
9	5,224.75	9	5,775.56	9	6,294.36	9	6,768.77	9	7,182.66	9	7,511.50	9	7,695.30	9	7,995.30	9			
1/4	5,236.46	1/4	5,786.71	1/4	6,304.72	1/4	6,778.03	1/4	7,190.43	1/4	7,517.08	1/4		1/4		1/4			
1/2	5,248.18	1/2	5,797.86	1/2	6,315.07	1/2	6,787.30	1/2	7,198.20	1/2	7,522.66	1/2		1/2		1/2			
3/4	5,259.89	3/4	5,809.01	3/4	6,325.43	3/4	6,796.57	3/4	7,205.98	3/4	7,528.24	3/4		3/4		3/4			
10	5,271.61	10	5,820.17	10	6,335.78	10	6,805.83	10	7,213.75	10	7,533.83	10		10		10			
1/4	5,283.28	1/4	5,831.26	1/4	6,346.06	1/4	6,814.99	1/4	7,221.37	1/4	7,539.17	1/4		1/4		1/4			
1/2	5,294.96	1/2	5,842.35	1/2	6,356.34	1/2	6,824.15	1/2	7,229.00	1/2	7,544.51	1/2		1/2		1/2			
3/4	5,306.64	3/4	5,853.45	3/4	6,366.61	3/4	6,833.31	3/4	7,236.62	3/4	7,549.86	3/4		3/4		3/4			
11	5,318.31	11	5,864.54	11	6,376.89	11	6,842.47	11	7,244.25	11	7,555.20	11		11		11			
1/4	5,329.95	1/4	5,875.58	1/4	6,387.09	1/4	6,851.52	1/4	7,251.72	1/4	7,560.29	1/4		1/4		1/4			
1/2	5,341.59	1/2	5,886.62	1/2	6,397.28	1/2	6,860.57	1/2	7,259.19	1/2	7,565.38	1/2		1/2		1/2			
3/4	5,353.22	3/4	5,897.66	3/4	6,407.48	3/4	6,869.62	3/4	7,266.66	3/4	7,570.48	3/4		3/4		3/4			

CERTIFIED CHART FOR THE ABOVE NAMED TANK ONLY.

STRAPPED: 10/23/2012 CL - SW
 CALCULATED: 10/23/2012 CL
 PRINTED: 10/23/2012 CL
 CANCEL S AND SUPERCEDES
 ALL PRIOR TO 10/20/12

PRECISION MEASUREMENT
 & ANALYSIS, INC.
 P.O. Box 2092
 Pearland, Texas 77588
<http://www.pjmacorp.net>

[Signature]



STERN

BOW

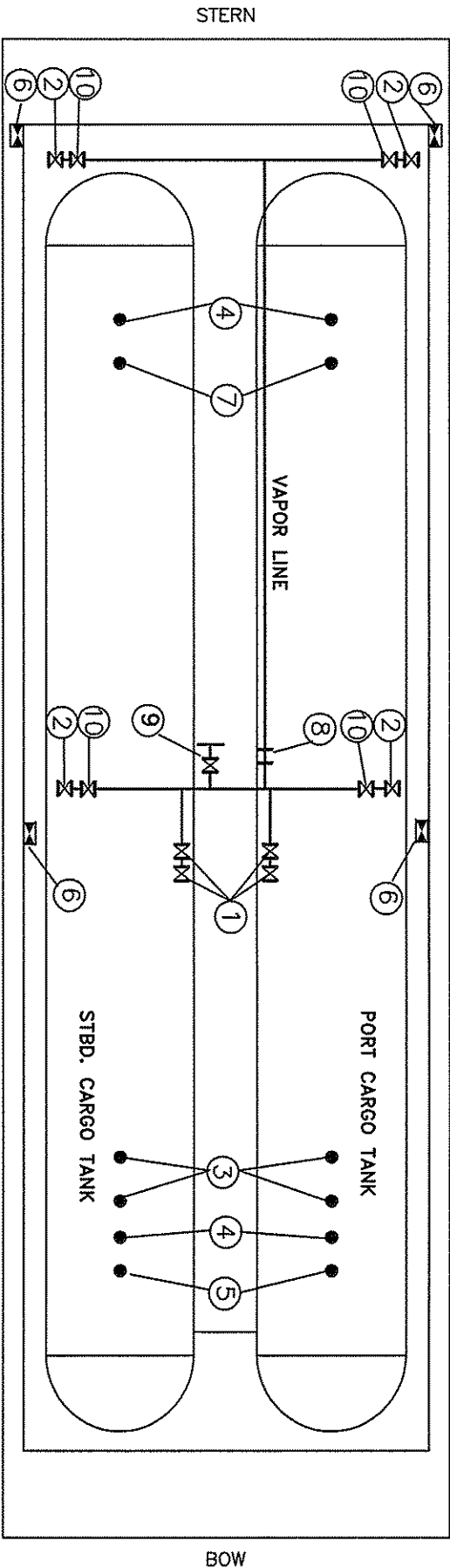
LEGEND

- NO DESCRIPTION
- 1 TANK VALVE
 - 2 MANUAL HEADER VALVE
 - 3 HEADER BLOCK VALVE
 - 4 CROSSOVER VALVE
 - 5 THERMOMETER AND PRESSURE GAUGE
 - 6 GAUGE STICKS LOW - MED - HIGH
 - 7 BERGAN DFG
 - 8 AIR ACTUATED HEADER VALVE
 - 9 EMERGENCY SHUTDOWN

Effective Date:	Revision No.	Page
10/23/12	0	1 of 2

CARGO PIPING
DIAGRAM

WEB P7



LEGEND

- | | |
|----|--------------------------------------|
| NO | DESCRIPTION |
| 1 | TANK VALVE |
| 2 | VENT HEADER VALVE (LINE BLOCK VALVE) |
| 3 | SAFETY RELIEF VALVE |
| 4 | NITROGEN PURGE VALVE |
| 5 | SLIP TUBE |
| 6 | AIR OPERATED REMOTE CONTROLLED |
| 7 | QUICK CLOSING EMERGENCY STATION |
| 8 | NOZ. |
| 9 | SPACER |
| 10 | CROSSOVER VALVE |
| | AIR ACTUATED HEADER VALVE |

VAPOR PIPING, GAUGING
AND OVERFILL
PROTECTION

WEB P7

Effective Date:	Revision No.	Page
10/23/12	0	2 of 2